

*Wildfire  
Preparedness  
& Response  
Plan*



*From the Land and Spirit of the Aaida*

# Table of Contents

**Introduction** ..... **1**

**Objective** ..... **1**

**Scope** ..... **1**

**Updates and Revisions** ..... **1**

**Legislative Reference** ..... **1**

**Wildfire Preparedness** ..... **3**

**Site Information** ..... **3**

**Active Harvesting 2023** ..... **3**

**Recent Harvesting** ..... **4**

**Roles and Responsibilities – Fire Preparedness** ..... **8**

**Chief Forester** ..... **10**

            Fire Warden ..... 10

**Contract Supervisor / Incident Commander** ..... **10**

            Incident Commander ..... 10

**Taan & Haico Office Staff** ..... **11**

            Sector Bosses ..... 11

            Supervisors ..... 13

            Workers / Crew ..... 13

**Worker Preparedness** ..... **14**

        General ..... 14

**Equipment** ..... **14**

        Fire Tools ..... 14

**Inspections** ..... **16**

**Weather Monitoring** ..... **17**

        Fire Weather ..... 17

**Fire Response Procedures** ..... **19**

**Receiving an Emergency Call** ..... **19**

        Additional Wildfire Information to be Recorded ..... 21

**Wildfire Response** ..... **22**

        Emergency Response Action Plan ..... 22

**When to Action a Fire** ..... **25**

**When to Report a Wildfire** ..... **25**

        Legal Requirements ..... 25

**Aircraft Authorization** ..... **26**

**Roles and Responsibilities – Fire Response** ..... **26**

        Contract Supervisor, or Incident Commander ..... 26

        Sector Bosses ..... 26

        Crew Boss ..... 27

        Fire Fighters ..... 28

        Office Personnel ..... 29

        Staff ..... 29

**Fire Line Safety** ..... **30**

Crew Briefing .....30

**Ministry of Forests and Range Take-Over Process.....31**

**Cost and Compensation for Fire Control - Summary .....31**

Legal Requirements .....31

## List of Tables

Table 1: Key Personnel & Fire Plan Positions.....9

Table 2: Fire Tool Requirements.....15

Table 3: Inspection Items .....16

Table 4: Fire Danger Class (DGR) Danger Index Region 1 .....17

Table 5: Restrictions on High Risk Activities .....18

Table 6: High Risk Activities.....18

## List of Figures

**Figure 1: Wildfire Response Organisational Chart .....9**

## Appendices

- Appendix 1: Fire Cache Equipment
- Appendix 2: Fire Event and Fire Record Forms
- Appendix 3: Definitions
- Appendix 4: Risk Map

# **Introduction**

## **Objective**

The following Fire Preparedness and Response Plan (Fire Plan) is developed specifically for the Taan Forest LP and its Contractors

The objective of the Fire Plan is to:

- provide written guidance to employees and contractors for wildfire situations

These procedures were designed to complement Taan Forest Emergency Response Plan.

## **Scope**

Health and Safety are the first priorities. Under no circumstances are these procedures to replace, or come before Taan Forest's Health and Safety Policy or Standard Operating Procedures.

This Fire Plan applies to all Taan Forest personnel, including employees, consultants and contractors working within Taan Forest Tenures

## **Updates and Revisions**

Fire Plans will be updated annually to reflect changes to operations, equipment updates, personnel updates, training updates and hazard assessment.

The Contract Supervisor is responsible for maintaining and distributing the Fire Plan, with assistance from the Planning and Engineering Departments.

## **Legislative Reference**

The Wildfire Act, Wildfire Regulation and Occupational and Health & Safety Regulations are referenced to develop the Fire Plan:

*As per Wildfire Act s.6 (3), if a fire starts at, or within 1 km of, the site of an industrial activity, the person carrying out the industrial activity must immediately carry out fire control and extinguish the fire, if practicable, and continue with fire control until the fire is extinguished, it becomes impracticable to continue with fire control, or an official relieves the person in writing from continuing.*

*As per Wildfire Regulation s.13 (1) (2), a person carrying out an industrial activity must make available to fight the fire, if started on Crown land, all of the person's workers who are working within 30 km by road of the site of the industrial activity, fire suppression systems located within 30 km by road of the site of the industrial activity, heavy equipment located within 30 km by road of the site of the industrial activity, and fire fighting hand tools. However, if the fire started on land other than Crown land, a person carrying out an industrial activity must make available to fight the fire all of the person's workers who are working on the land on which the fire started, fire suppression systems located on that land, heavy equipment located on that land, and fire fighting hand tools.*

*As per Wildfire Regulation s.13 (3), a person carrying out an industrial activity is exempt from section 6 (3) of the Wildfire Act in respect of a fire that starts at or within 1 km of the site of the industrial activity if the site is within a protected area, or on private land that is not owned by the person or another who acts on the person's behalf/direction.*

Operations must be able to demonstrate that they comply with the Occupational Health and Safety (OHS) Regulation. *Part 26.19 (1) of the OHS Regulation states that before fighting a forest fire, workers must be trained in their fire fighting duties in accordance with a standard that is acceptable to the Board, and be physically capable of performing their duties safely and effectively. Part 26.19 (2) states that workers required to fight forest fires must be retrained annually.*



# Wildfire Preparedness

## Site Information

Location	Coordinates	
Taan Office (Fire Cache)	N53° 16' .10.27"	W131°59'27.43"
Juskatla Shop (Fire Cache)	N53° 36'47.60"	W132° 18'48.9"
Skidegate DLS	N53° 15'04.45"	W132° 06'23.23"
Ferguson DLS	N53° 40'14.48"	W132° 17'21.14"
McClinton DLS	N53° 38'47.81"	W132° 35'33.83"
Dinan DLS	N53° 41'37.37"	W132° 36'10.59"
Alliford DLS	N53° 12'29.98"	W131° 59'13.51"
Louise DLS	N53° 01'27.56"	W131° 53'58.52"
Sandspit Air Port	N53° 15'13.37"	W131° 48'59.12"
Masset Air Port	N54° 01'21.61"	W132° 07'06.12"

## Active Harvesting 2023

Block	Coordinates	Coordinates	Taan Safety Grid X,Y	Ease of Public access	Fire Risk Map	Taan Fire Risk Determination
AER001	53° 4' 53" N	131° 52' 0" W	M,22 / N, 22	Moderate	Low	Low
AWN012	53° 36' 9" N	132° 33' 22" W	E, 9	Moderate	Low	Low
AWN014	53° 34' 20" N	132° 35' 30" W	E, 10	Moderate	Low	Low
COW009	53° 39' 51" N	132° 19' 36" W	H, 8	Easy	Low	Low
DEM001	53° 23' 54" N	132° 22' 13" W	G, 14	Difficult	Low	Low
DEM003	53° 23' 03" N	132° 22' 07" W	G, 14	Difficult	Low	Low
FEA003	53° 26' 42" N	132° 08' 44" W	J, 13	Moderate	Low	Moderate
GRA001	53° 06' 36" N	131° 42' 11" W	P, 21	Moderate	Low	Moderate
GRA006	53° 05' 26" N	131° 42' 08" W	P, 22	Moderate	Low	Moderate
HAA007	53° 11' 57" N	131° 52' 08" W	N, 19	Moderate	Low	Moderate
KUM004	53° 34' 30" N	132° 5' 34" W	K, 10	Easy	Low	High
LOW002 (BCTS)	53° 33' 45" N	132° 01' 49" W	L, 11	Moderate	Low	Moderate
LOW004	53° 28' 50" N	131° 59' 59" W	L, 11 / M, 11	Moderate	Low	Moderate
LOW007	53° 33' 29" N	132° 3' 14" W	L,11	Moderate	Low	Moderate
LAW003	53° 23' 41" N	131° 56' 52" W	M, 15	Easy	Severe	High
LAW006	53° 22' 55" N	131° 57' 09" W	M, 15	Easy	Severe	High
LAW007	53° 22' 43" N	131° 58' 36" W	L, 15	Easy	High	High
LOG019	53° 34' 01" N	132° 07' 06" W	K, 11	Easy	Low	Moderate
LYK003	53° 37' 53" N	132° 9' 29" W	J, 9 / K, 9	Easy	Low	High
MIL001	53° 20' 49" N	131° 57' 30" W	M, 16	Easy	Severe	Moderate
MIL003	53° 21' 8" N	131° 58' 13" W	L, 15/ M, 15/ L, 16/ M, 16	Easy	Severe	Moderate

MAM007	53° 30' 35" N	132° 29' 60" W	F, 11 / F, 12	Difficult	Low	Low
MAM008	53° 34' 04" N	132° 03' 01" W	L, 11	Easy	Low	Low
SHN001	53° 37' 35" N	132° 29' 43" W	F, 9	Moderate	Low	Moderate
SKI016	53° 5' 9" N	131° 58' 6" W	L, 21	Moderate	Low	Low
TAL001	53° 34' 10" N	132° 38' 0" W	D, 10	Difficult	Low	Low
TOW008	53° 35' 33" N	132° 26' 34" W	G, 10	Moderate	Low	Low






See Appendix 4 for risk map

### Recent Harvesting

Block	Coordinates		Ease of Public access	BC Fire Risk Map	Taan Fire Risk Determination
AIN001	53° 45' 39" N	132° 28' 44" W	Moderate	Low	Moderate
ALL001	53° 14' 02" N	131° 53' 36" W	Easy	Severe	Moderate
BER005	53° 28' 43" N	132° 06' 40" W	Difficult	Low	Moderate
BER006	53° 29' 00" N	132° 05' 52" W	Moderate	Low	Moderate
DIN007	53° 39' 42" N	132° 41' 55" W	Difficult	Low	Low
DIN009	53° 39' 51" N	132° 40' 1" W	Difficult	Low	Low
GEI002	53° 34' 34" N	131° 57' 12" W	Moderate	Severe	High
GEI003	53° 34' 07" N	131° 58' 13" W	No Access	Severe	High
GLD005	53° 29' 33" N	132° 19' 26" W	Moderate	High	Low
HAA001	53° 12' 34" N	131° 53' 49" W	Difficult	High	Moderate
HAA002	53° 12' 52" N	131° 51' 22" W	Moderate	Severe	High
HAA003	53° 12' 48" N	131° 52' 17" W	Difficult	Severe	High
HAA004	53° 12' 01" N	131° 52' 25" W	Moderate	Moderate	High
HAA005	53° 13' 08" N	131° 53' 34" W	Difficult	Severe	Moderate
IAN003	53° 44' 16" N	132° 42' 07" W	Moderate	Low	Moderate
IAN014	53° 48' 36" N	132° 29' 11" W	Moderate	Low	Moderate
IAN015	53° 43' 50" N	132° 39' 15" W	Difficult	Low	Moderate
IAN016	53° 49' 32" N	132° 27' 57" W	Difficult	Low	Moderate
JUN002S	53° 22' 29" N	131° 57' 14" W	Moderate	Severe	Moderate
JUN003S	53° 22' 27" N	131° 57' 33" W	Moderate	Severe	Moderate
JUN005S	53° 22' 21" N	131° 56' 53" W	Moderate	Severe	Moderate
KNG002	53° 26' 36" N	132° 19' 53" W	Moderate	Low	High
KNG003	53° 26' 51" N	132° 17' 05" W	Moderate	Low	Low
KUM003	53° 34' 9" N	132° 4' 36" W	Easy	Low	High
LAW001	53° 24' 46" N	131° 55' 49" W	Easy	Severe	High

LAW002	53° 24' 56" N	131° 56' 46" W	Easy	Severe	High
LYK002	53° 38' 52" N	132° 10' 28" W	Easy	Severe	High
MAM002	53° 32' 31" N	132° 22' 30" W	Moderate	Low	Low
MAM003	53° 32' 10" N	132° 23' 30" W	Moderate	Low	Low
MAM004	53° 30' 36" N	132° 25' 11" W	Moderate	Low	Low
MAM005	53° 30' 36" N	132° 25' 11" W	Moderate	Low	Low
MAM006	53° 29' 10" N	132° 27' 35" W	Difficult	Low	Low
MAT001	53° 00' 21" N	131° 48' 34" W	Difficult	Low	Low
MAT006	53° 00' 05" N	131° 47' 14" W	Difficult	Low	Moderate
MAT007	53° 00' 19" N	131° 50' 04" W	Difficult	Low	Low
MAT012	53° 04' 01" N	131° 46' 36" W	Difficult	Low	Low
SHN006	53° 38' 58" N	132° 28' 57" W	Difficult	Low	Low
SHN008	53° 38' 33" N	132° 28' 26" W	Difficult	Low	Low
SKE002	52° 58' 15" N	131° 43' 07" W	Difficult	Low	Low
SKE008	52° 56' 37" N	131° 39' 36" W	Difficult	Low	Low
SKI013	53° 04' 54" N	131° 54' 28" W	Moderate	Low	Low
TAR001	53° 49' 07" N	132° 26' 13" W	Moderate	Low	Moderate
TOW007	53° 37' 06" N	132° 21' 04" W	Moderate	Low	Low
WAS006	52° 58' 07" N	131° 39' 02" W	Difficult	Low	Moderate
WAS008	52° 57' 12" N	131° 42' 08" W	Difficult	Low	Low
YAK010	53° 34' 35" N	132° 11' 37" W	Difficult	Low	Moderate
YAK011	53° 33' 60" N	132° 12' 13" W	Difficult	Low	Moderate

Colour Coding:

	>40% Composition of Cedar - Cedar Blocks
	Low Risk
	Moderate Risk
	High Risk
	Severe Risk



## Contact Information

<b>Taan Forest 24 hr Emergency Contact</b>		
Gary Russ, Harvesting Supervisor	o) 250-559-2337	c) 778-260-0372
Jud Jones, Roads Supervisor	o) 250-559-2337	c) 250-626-7527
Jay Jones, Asst Harvesting Supervisor	o) 250-559-2337	c) 778-888-7850
Drew Cook, Asst. Engineer	o) 250-559-2337	c) 778-260-4691
Joel Richardson, Salvage, Local sales	o) 250-559-2337	c) 778-875-9414
Jesse Stromquist, Ops Supervisor	o) 250-559-2337	c) 778 260-5856
Jerome Benoit, Planning Manager	o) 250-559-2337	c) 778-260-0046
Jeff Mosher, Chief Forester	o) 250-559-2337	c) 250-203-0199
Kirby Jones, Office Manager	o) 250-559-2337	c) 250-637-1245

## *EPRP Emergency Contacts*

<b>Radio Frequencies</b>		<i>Rx</i>	<i>Tx</i>	<i>Tone</i>
QCR		<i>164.37</i>	<i>168.39</i>	
QCR-QCC		<i>159.54</i>	<i>159.54</i>	<i>79.7</i>
Taan RPTR		168.180	168.840	-
Taan SPLX (Truck to Truck)		168.180	168.180	-
Dinan SPLX (Truck to Truck)		153.350	153.350	-
Heli-Jet		166.545	166.545	-
Heli-Jet RPTR		166.545	171.630	151.4
Heli-Jet RPTR		166.545	171.630	131.8
Heli-Jet RPTR		166.545	171.630	100.0
Marine Radio: Digital Select Calling	"DSC Call Button"			
Marine Radio: Coast Guard Distress	16			

<b>Medical Incident</b>	Provincial Air Ambulance (Emergency)	911	
	AMBULANCE	1-800-461-9911	
	Marine & Aircraft Distress	1-800-567-5111	*311 from cellular
	Poison Control Center	1-800-567-8911	
	WorkSafe BC – Emergency Reporting	1-888-621-7233	1-866-922-4357 (after hours)
	Haida Gwaii Hospital	250-559-4900 Ext 2, Ext 1	
	Masset Hospital	1-250-626-4711	
<b>Electrical Line Contact</b>	BC Hydro	1-800-769-3766	
<b>Explosives</b>	CANUTEC	1-613-996-6666	*666 from cellular
	Transportation of Dangerous Goods	1-604-666-2955	
	Emergency Management BC	1-800-663-3456	
<b>Forest Fire</b>	Ministry of Forests Fire Reporting Hotline	1-800-663-5555	*5555 from cellular
	Coastal Fire Center (Emergency)	1-250-951-4200	1-800-663-5555
	Coastal Fire Center (non-emergency)	1-250-951-4222	
	Masset Fire Dept.	1-250-626-5511	
	Port Clements Fire Dept.	1-250-557-4355	
	Queen Charlotte Fire Dept.	250-559-4488	
	Sandspit Fire Dept.	250-637-2222	
	Skidegate Fire Dept.	250-559-8300	
<b>Spill</b>	Canadian Coast Guard Ocean Spill Reporting (Roc1cor1@dfo-mpo.gc.ca)	1-800-889-8852	250 480 2772
	Prince Rupert BC	250-627-3081	250-627-3077
	Ministry of Environment Ministry of Environment	1-800-663-3456 SpillReports@gov.bc.ca	Report a Spill APP
	Department of Fisheries and Oceans	604-666-0384	
	Western Canada Marine Response Corp.	604-294-9116	Need contract to call
<b>Landslide</b>	Ministry of Forests	250-559-6200	
	Department of Fisheries and Oceans	1-604-666-0384	
<b>Drinking Water System</b>	Emergency Management BC	1-800-663-3456	
	Environmental Health Official	1-250-622-6380	
<b>Conservation Officer</b>		250-559-6278	
		250-559-6205	
	*RAP Line	1-877-952-7277	*Report A Poacher Line
<b>Air Support</b>	Helijet	250-637-5344	
	White Rive Helicopters	1-250-624-4686	
	Skeena/Great Slave Helicopters	1-250-624-4757	
	Inland Air Seaplanes	1-250-624-2577	

## Contractors

<b>LNR Excavating</b> <b>(Fire Assistance -12 trained)</b>	Randy Nemanishen	c) 250-380-8946 h) 250-557-4362
<b>Watchman Forest Products Ltd.</b> <b>(Fire Assistance - 2 trained)</b>	Richard Jones	c) 778-260-9669
<b>CNR Salvage</b> <b>(Fire Assistance – DT falling/ Blasting – 1 Trained)</b>	Chris Putterill	c) 250-637-1768 or 250-637-1401 o) 250-637-5449
<b>Slim Pickings</b>	Dave Pottinger	250-877-8886
<b>BenRich Contracting Ltd.</b> <b>(Fire Assistance – 1 Trained)</b>	Jim Richardson Cheryl Bennett	250-626-7331 or 250-557-4764
<b>King Creek Falling/Sgaana Ventures</b> <b>(Fire assistance – DT falling/ Blasting 3 Trained)</b>	Jesse Myles	250-557-2420
<b>Tree Surgeon</b> <b>(Fire Assistance – 3 Trained)</b>	Daniel Pineault	250-559-8082
<b>A.L. Condrotte</b>	Al Condrotte	250-557-4257
<b>North Pacific Timber Corp.</b> <b>(Fire assistance – DT Blasting/ Falling 3 Trained)</b>	Danny Robertson Kris May	D) 250-637-1111 K) 250-559-8432
<b>Against the Grain FP</b> <b>(Fire Assistance – 2 trained)</b>	Travis Glasman	250-637-1011
<b>Off the Map Consulting</b> <b>(Fire Assistance – 1 Trained)</b>	Stephan Winter	250-626-7806 250-626-3548
<b>Xaayda Ventures</b>	Hyland Fraser	778-260-0141
<b>Haida Tree Worx</b>	Richie Buxton	604 358-0051
<b>Highlander Marine Services Ltd</b> <b>Spill Assistance</b>	Danny Robertson	250 637-1111

## Roles and Responsibilities – Fire Preparedness

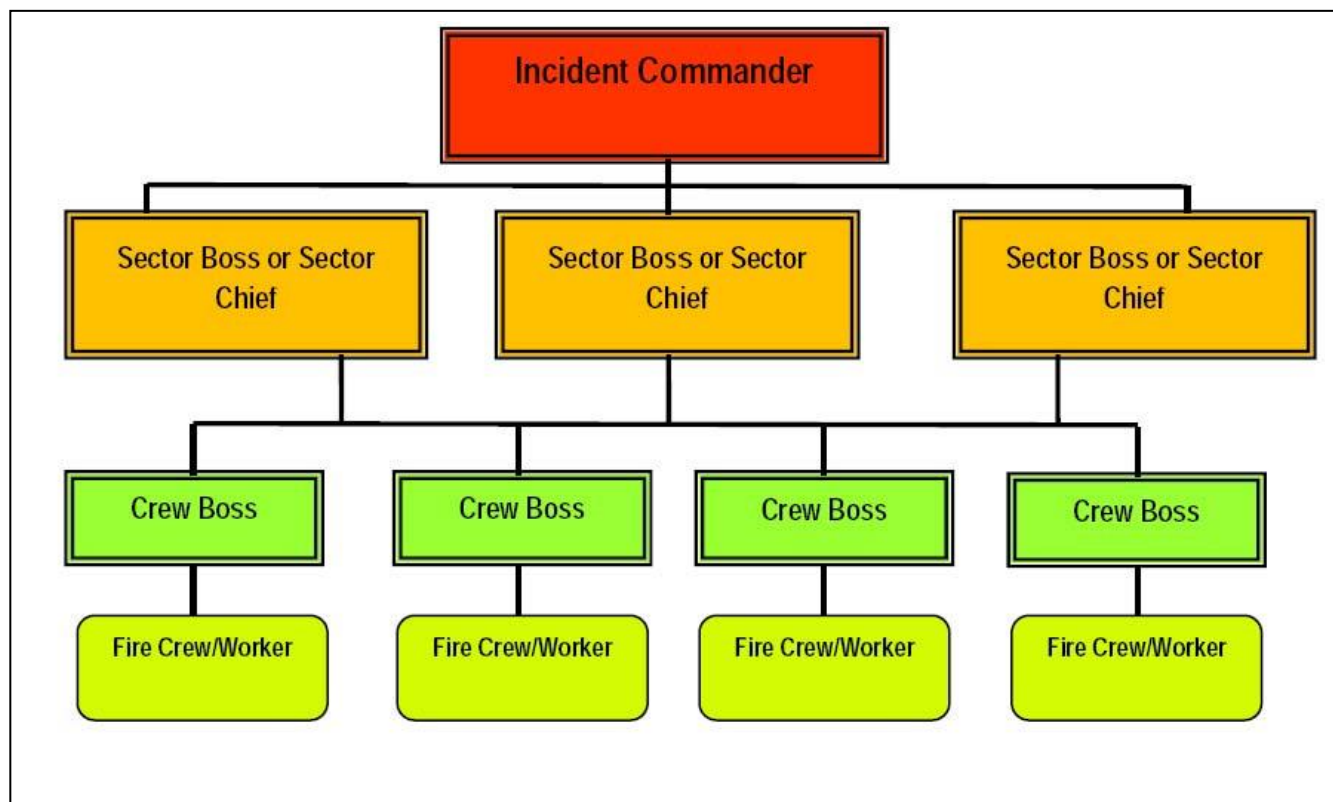
The following section details the roles and responsibilities of personnel to prepare for and respond to emergency situations. Note: in some cases, Contractors may be assigned various roles and responsibilities.

**Table 1: Key Personnel & Fire Plan Positions**

Fire Plan Position Title	Employer – Position
Fire Warden	Chief Forester
Incident Commander, Evacuation Coordinator	Contract Supervisor
Sector Chiefs (Larger Fires)	Taan and Haico Office Staff
Crew Boss, Supervisor	Supervisors / S100 Trained Personnel
Fire Fighters	S100 Trained Personnel
Fire Watcher	As Designated

It is important to note that during wildfire events, the reporting structure changes from the normal hierarchy so that the Incident Commander retains overall responsibility and command with respect to firefighting activities. For each Crew, one Crew Boss is chosen. The Crew Boss retains overall responsibility and command for each member in the Crew.

**Figure 1: Wildfire Response Organisational Chart**



## ***Chief Forester***

- Ensure adequate resources are allocated to maintain fire preparedness and response procedures, equipment and training
- Ensure the key personnel are adequately trained in fire response and prevention
- Ensure the Fire Plan is updated and distributed to operational personnel, as required, with assistance from the Contract Supervisor
- Assist the Contract Supervisor to determine if mobilization of additional equipment from external agencies/companies is warranted
- Provide assistance and advice to the Contract Supervisor (in terms of preparation as well as response to an emergency)
- Assist the Contract Supervisor to determine the risk of fire starting or spreading outside of Fire Season
- Carry out roles and responsibilities of Fire Warden
- Assist the Contract Supervisor to ensure government agencies are notified of fire incidences as required

## **Fire Warden**

- Assist the Contract Supervisor / Incident Commander to ensure personnel are adequately trained in fire response and prevention
- Ensure the camp fire cache has adequate fire tools, and that they are periodically inspected and maintained, as required
- Assist the Incident Commander to locate fire-fighting equipment caches and guards
- Maintain daily fire weather records during fire season and notify Contract Supervisor and key personnel of Fire Danger Ratings

## ***Contract Supervisor / Incident Commander***

- Ensure copies of the Fire plan are readily available.
- Ensure personnel are trained in fire preparedness and response, as required
- Ensure adequate fire equipment is on site and maintained
- During emergencies, determine if mobilization of additional assistance/equipment from External Contractor/ Agencies/ Companies is warranted, with assistance from the Fire Warden
- Ensure that emergency exercises are completed, as required, and records are maintained on file
- Recognize and take action against reported and observed hazardous conditions
- Assign tasks and responsibilities to Supervisor and workers, as required
- Monitor fire weather conditions and determine when there is a risk of a fire starting or spreading outside the Fire Season, with assistance from the Fire Warden
- Conduct Fire Investigations and complete Fire Event Reports and Fire Record Forms, as required, with assistance from the Fire Warden
- Carry out additional roles and responsibilities, of the Incident Commander or Fire Boss where necessary

## **Incident Commander**

The Incident Commander (IC) will take on the role of **Fire Boss** (or delegate responsibility). He/she is responsible for the ultimate control of all fires, providing overall direction and firefighting strategy and for shutting down work sites as required; notifies Ministry Agencies; Identify Sector Bosses, where required; responsible for calling additional support personnel if necessary

### **Develop overall strategy:**

- Formulate an effective fire suppression plan
- Coordinate activities of air tankers, helicopter and all field fire control activities (refer to 'Aircraft Authorization' section)
- Keep the Supervisors informed of the current and anticipated situation and additional requirements
- Ensure fire line organization is effective and that each *Sector Boss* knows his responsibilities
- Ensure that safety standards are met

### **Communicate information:**

- Give safety talks prior to fire suppression activities
- Check that each *Sector Boss* understands all phases and the overall strategy
- Prepare and submit fire status reports as scheduled
- Regularly up-date the Ministry Agencies, adjacent operators and outside resources

### **Once the fire is extinguished, record details and events of the incident:**

- Indicate the success / failure of actions taken to suppress the fire and make recommendation on how to improve these actions next time

## ***Taan & Haico Office Staff***

### **Sector Bosses**

The Sector Bosses provide specialized expertise and advice to the Incident Commander in critical areas related to the response such as:

- Health, medical and product-related information
- Responder safety and site security
- Legal affairs and regulatory compliance
- Public affairs / media relations
- Potential insurance and/or liability issues
- Human resource issues (e.g. labour relations, notification of families/next-of-kin)
- Community and government liaison / communications

Sector Bosses are appointed by the Incident Commander based on the requirements of the incident and available personnel. For certain areas of expertise (e.g., legal, risk management and public affairs/media relations), outside contractors and/or pre-identified personnel may be called in to supplement or support the response.

### **Health and Safety**

Health & Safety staff establishes the safety protocols and procedures associated with the response. He/she obtains information about the properties, behaviour, potential health hazards and risks associated with chemicals or hazardous materials and ensures that overall standards for safety and site security are strictly followed by all Taan Forest responders. He/she oversees the treatment of injured employees in conjunction with the local hospital and medical authorities as well as any follow-up treatment required.

### **Human Resources**

Human Resources staff address various labour relations issues resulting from an emergency. He/she may also be involved in contacting the families of injured employees, providing or arranging appropriate counselling for employees or their families, and providing advice on company benefits and related policies.

Human Resources may also arrange sufficient personnel, housing and meals (as directed) and assist in organizing shift changes.

### **External Liaison**

The External Liaison's role is to act as the ongoing linkage between key external stakeholders and the Response Management Team. External stakeholders may include various government agency representatives, local residents or business owners, community groups, environmental or interest groups, etc. The Liaison Officer updates these groups on a regular basis and ensures their key issues and concerns are communicated to the Incident Commander.

### **Operations**

The Operations section is responsible for mobilizing and supervising on-site response operations performed by the Emergency Response Team, Taan Forest emergency response crews (machine operators, fallers, and ground crew), and/or hired contractors brought in to assist with the physical response. Identifies the personnel, equipment, and other resources needed to respond safely and effectively to the incident. Dispatches available firefighting equipment and supplies, as required.

The Operations Chief develops and implements tactical action plans to contain, control, or mitigate the incident safely and effectively as the response progresses in consultation with Incident Commander

Maintain a night watchman until no hot spots are found during the day

### **Planning**

The Planning section collects, organizes and analyzes critical information about the incident, and oversees the development of operational response plans to deal with the current and anticipated requirements of the situation. Will provide continuous liaison with local Ministry personnel. Will ensure the ongoing collection, evaluation, documentation and dissemination of critical information about the incident. Will ensure that all crews on the fire site have adequate communications and ensure that safety is not compromised at the fire site. Will take control of radio and phone communication. Will maintain a continuous detailed record of all events, reports, fire movement, Ministry visits or instructions, communications and all accidents and incidents

### **Logistics**

The Logistics section is responsible for ensuring the timely, cost-effective, and efficient procurement and delivery of all resources including personnel, equipment, supplies, and outside services necessary to conduct and support response operations and related management activities. Will keep a continuous inventory of all firefighting equipment and ensure that all equipment is accounted for and maintained in good working order. Will up-date and track fire progress and provide maps showing fire boundaries. Identify possible heli-ports, best access to fire, fire guard locations, water sources and hose lays, heavy fuel areas and critical / important features for suppression activities. Will ensure the weather records are being maintained and continuous up-dated weather information is provided. During an emergency, the Logistics Section Chief makes these arrangements as requested to do so by the Incident Commander.

### **Once the fire is extinguished, record details of the incident and clean-up:**

- List of fire fighters names and time spent on fire
- Equipment on fire, time on fire, who operated and fuel consumed (keep hours of use each day and mileage if applicable)
- Fire hose type and lengths use each day
- Track other cost such as: loss or damage to equipment, repairs made to equipment, fuel supplied to equipment not owned by Taan Forest, air craft charters
- Recover all fire equipment, clean / repair and return to fire caches / shop
- Replenish all required fire equipment as required

Once the fire is extinguished, prepare a recommendation for replacing equipment. Also summarize the above information for the fire cost records to be provided to the Camp / Operations Accountant

## **Finance**

The Finance section oversees the financial aspects of the response including expense authorities and processing, cost tracking, and claims management (i.e. Ministry claims, insurance). During an emergency, Finance ensures appropriate expense authorities and authorizations are in place to conduct the response including setting up a cost management system for tracking response-related expenditures. Finance will direct timekeepers in recording fire fighter's time.

Finance will prepare a preliminary insurance report once the fire is extinguished and the final insurance report when all costs / damages have been determined

## **Supervisors**

- Ensure workers are adequately trained in fire preparedness and response procedures
- Harvesting Supervisor to determine when additional resources are required in fire situations
- Ensure equipment and field caches have adequate fire response and that the equipment is inspected periodically and maintain as required. Promptly rectify any deficiencies
- Carry out additional roles and responsibilities of the crew boss

## **Crew Boss**

- Oversee initial attack activities until either the fire is extinguished or the Incident Commander takes over responsibility
- Aid the Incident Commander in organization and implementation of fire suppression activities and assign tasks and responsibilities to crew members for fire suppression
- Assist the Incident Commander to locate pump/ relay tank site locations, advance fire guards, etc.

## **Workers / Crew**

- Be familiar with the Fire Response Procedures
- Know the location of fire response equipment and be familiar with use. Notify your Supervisor of any deficiencies
- Participate in fire response situations, as required and within your level of training
- Report all fires, no matter how small, to your Supervisor

## **Fire Watcher**

- Ensure the work site(s) of the high risk activity is visible
- Actively watch and patrol for sparks and fires on the site(s) of high risk activities
- Ensure they have at least one fire fighting hand tool to carry out fire control
- Where fire is discovered, initiate appropriate fire response actions
- Ensure adequate communication tools (e.g., radio) are available on site to report a fire

## **Fire Fighters**

- Be prepared
- Evaluate the hazard
- Take control
- Call for help
- Respond / take action
- Follow-up



## **Worker Preparedness**

### **General**

- Be familiar with Fire Plan
- No smoking or Lunch fires in the field during fire season (high hazard reading)
- No blasting after 1pm during fire seasons (high hazard reading)
- Wear appropriate clothing (NO nylon or polyester fallers pants or hi-vis T-shirts – these items are extremely flammable)
- Keep all firefighting equipment on site as required by Taan Forest Standards (keep pump cans full, fire tools at the most convenient spot adjacent to site)
- Know where the firefighting equipment cache is located
- Be familiar with operation of fire equipment (extinguishers, pump cans, etc.)
- Have a basic understanding of Fire Suppression tactics, safety procedures, etc. through annual Fire Suppression Training (e.g. S100 Training, WATCH OUT, LCES etc.)
- Know the location of the closest available water and portable tank
- Inspect work site for potential fire hazards and reduce where possible (flammable material must be removed from within 3m of stationary machinery, when welding or cutting in the woods during hazardous periods consider wetting down work areas prior to work, etc.)
- Check on the weather (monitor sticks or relative humidity) and current forest fires hazard rating

## **Equipment**

### **Fire Tools**

Sufficient Fire Fighting Hand Tools must be available at work sites in a combination and type to properly equip each person who works at the site with a minimum of one hand tool. These requirements are applicable to all operations operating within 300m of a forest land. A list of required Fire gear is located within Table 2. Appendix 1 lists Fire Cache equipment for each operating area.

The required fire tools must be kept on/ in equipment and maintained during **Fire Season** and when there is risk of a fire starting or spreading. Fire tools include Fire Fighting Hand Tools (i.e., shovels, pulaskis, axes, hand tank pumps and fire extinguishers) and Water Delivery Systems (i.e., a system for suppressing fire by delivering water, a suppressant or a surfactant).

An adequate Water Delivery System must be kept at the work site where high risk activities (see [Table 6: High Risk Activities](#)) are preformed (i.e., located within 20minutes of the activity and must be in place prior to a fire danger class of moderate or higher).

In situations where there is a risk of fire starting or spreading outside Fire Season, fire tool requirements are at the discretion of the Contract Supervisor and Fire Warden.

Exemptions from some Wildfire Regulation requirements may be available from the Ministry of Forest and Range, but must be obtained in advance. Requests for exemptions will be forwarded to the Fire warden and implemented as appropriate.

**Table 2: Fire Tool Requirements**

Equipment	High Risk Activities (Wildfire Regulation s1.1)	Tools			Suppression System			
		Shovels	Pulaski/ Mattock	Hand Tank Pumps	Fire Ext. <sup>1</sup>			Water Delivery System <sup>2</sup>
					1A 5B:C	3A 10B:C <sup>3</sup>	3A 20B:C <sup>3</sup>	
General – Individual (Power saw Operator)	Operating a power saw other than on a road, landing or in a log sort area; Mechanical Brushing	*	*	-	0.5lbs bottle			-
General – Tool Cache 1 (>20 persons)	N/A	3	3	3	-	-	-	-
General – Tool Cache 1 (21-40 persons)	N/A	6	6	4	-	-	-	2
Crew Transport Vehicle – Truck / Gator	N/A	1	1	-	-	1	-	-
Transport vehicle – Tidy Tank / Fuel Transport	N/A	1	1	1	-	-	1	-
Truck – Logging (Off-Hwy & Hwy)	N/A	1	1	-	1	1	-	-
Vehicle – Shop / Welding	Using fire or spark producing tools (including cutting tools), grinding or welding	1	1	2	-	2	-	-
Equipment – Drill Rig	N/A	1	1	-	-	-	1	1
Equipment – Rock Drill	Rock Drilling (Quarrying. Does not include core drilling)	1	1	2	-	2	-	1
Equipment – Grader / Bulldozer / Excavators	N/A	-	-	1	-	1	-	-
Equipment – Brushers / Mowers	Clearing or maintaining R/W, including grass mowing	1	1	1	1	1	-	-
Equipment - Miscellaneous		-	-	1	1	1	-	-
Equipment – Excavator, cable yarder, buncher, processor, how chucker	Use of metal tracks, chains, studs or cables (except for if stationary, for road construction, maintenance or deactivation, loading logs on a road, landing or in a log sort area); clearing or maintaining R/W, including grass mowing; mechanical brushing	1	1	1	1	1	-	1
Yarder - Helicopter	N/A	-	-	-	-	-	-	1
Marine Vessel – Crew	N/A	-	-	-	-	1	-	-

Note: \* - when crew of 4 or more, one tool per person equally divided between shovels, pulaski’s and hand tank pumps. Tools are to be secured in cargo area of the vehicle. The driver of the vehicle is responsible to ensure that there are adequate fire tools in the vehicle at the start of each shift.

**Water Delivery System Equivalents**

- A helicopter equipped with a Bambi Bucket within 10minutes (return time) of a water source for high risk activities not accessible by road/rail
- A heavy left helicopter (e.g. S64) with a water bucket within 20minutes of a water source and capable of delivering 4,500L/hour
- Gravity Fed system with 450m of hose and a water sources capable of delivering 4,500L/hour and is within or adjacent to the active area

<sup>1</sup> Fire extinguishers must be equivalent to these requirements or better.

<sup>2</sup> A Water Delivery System is defined as a system for suppressing fire by delivering water, a suppressant or a surfactant. Note this definition does not include fire extinguishers. The Water Delivery System must be appropriate to the season, activities and hazards. For the purposes of Taan Forest, a Water Delivery System is a system that can deliver a sufficient volume of water to effectively fight a fire of a reasonably foreseeable size, taking into account site factors (e.g., size of the work area, terrain, slope, pump pressure, etc.). For example, a water delivery system must include: a portable pump, sufficient hose to reach all areas within the worksite (minimum 450m) and those tools required to operate the pump. The type of pump must be suitable to the worksite and available water source. Where it is not practical to have a water delivery system on site, at the discretion of the VP - Operations, a water delivery system may be stored on a tanker truck capable of accessing the work site within a reasonable amount of time.

<sup>3</sup> Where an engine having a power greater than 7.5 kw (10 hp) (not including a water-borne engine, an engine in a vehicle which is primarily used for the transportation of people, or an engine in a helicopter) has an integral vehicle Water Delivery System that is in good repair a 3A-10BC fire extinguisher is not required (only one 1A-5BC extinguisher is required).

## ***Inspections***

- Inspections of Fire Tools should form part of a regular equipment/ facility inspection routine, particularly at the start of the season and following any emergencies
- Fire extinguishers must be inspected monthly by qualified personnel for general condition, seal integrity, and appropriate pressure

**Table 3: Inspection Items**

Equipment	Inspection Items
Fire Tools	<ul style="list-style-type: none"><li>– Equipment is properly located (i.e., on equipment, in pickup trucks, etc.); fire cache stocked</li><li>– Pumps start easily and accessories, tools and gas or mix is available</li><li>– Hose is properly stored in a clean, dry place</li><li>– Porta-tanks and hand tank pumps are full of water</li><li>– Hand tools are in good condition</li><li>– Fire extinguisher inspections and maintenance are current</li></ul>

## Weather Monitoring

### Fire Weather

In active areas<sup>4</sup>, fire weather (including temperature, wind, relative humidity, and precipitation) must be monitored on a daily basis throughout the **Fire Season**.

For purposes of Taan Forest, Fire **Season**<sup>5</sup> will start April 1 and ends November 1.

Fire Weather and Fire Danger Class may be determined by either:

- checking the Fire Protection Branch website, daily, at: [http://bcwildfire.ca/Weather/Maps/danger\\_rating.htm](http://bcwildfire.ca/Weather/Maps/danger_rating.htm), or by
- making daily measurements of fire weather factors and calculating the Danger Class according to the Canadian Forest Fires Danger Rating System (refer to [Table 4: Fire Danger Class \(DGR\) Danger Index Region 1](#)).

Taan Forest operations are located in Danger Index Region 1.

**Table 4: Fire Danger Class (DGR) Danger Index Region 1**

Build Up Index	Fire Weather Index				
	0	1 - 7	8 - 16	17 - 30	31 +
0 - 19	Very Low I	Low II	Low II	Moderate III	Moderate III
20 - 42	Low II	Low II	Moderate III	Moderate III	High IV
43 - 69	Low II	Moderate III	Moderate III	High IV	High IV
70 - 118	Low II	Moderate III	High IV	High IV	Extreme V
119 +	Moderate III	Moderate III	High IV	Extreme V	Extreme V

<sup>4</sup> As per Wildfire regulation s. 5, if there is a risk of a fire starting or spreading on an area that is (a) forest land or grass land, or (b) within 300m of forest land or grass land, a person who carries out an industrial activity at a site in that area must ensure that fire fighting hand tools are available at that site in a combination and type to properly equip each person who works at the site with a minimum of one fire fighting hand tool (shovels, axes, pulaskis, hand tank pumps and fire extinguishers).

<sup>5</sup> "Fire Season" is defined as beginning on March 1 and ending on November 1, unless the area is snow covered.

Restrictions are placed on high risk activities if there is a risk of a fire starting or spreading (i.e., Fire Danger Class III (Moderate) or higher). These restrictions are outlined in Table 2.

**Table 5: Restrictions on High Risk Activities**

Fire Danger Class (DGR)	Restriction	Duration
<b>Moderate III</b>	After 3 consecutive days of DGR III or greater, maintain a fire watch after work for a minimum of 1 hour	Until after the DGR falls below III
<b>High IV</b>	Maintain a fire watcher after work for a minimum of 2 hours  After 3 consecutive days of DGR IV, cease activity between 1 p.m. PDT (Pacific Daylight Saving Time) and sunset each day	Until after the DGR falls below III  Until the DGR falls to III for 2 consecutive days, or until the DGR falls below III
<b>Extreme V</b>	Cease activity between 1 p.m. PDT (Pacific Daylight Saving Time) and sunset each day and maintain a fire watcher* after work for a minimum of 2 hours	Until after the DGR falls below IV for 2 or more consecutive days
	After 3 consecutive days of DGR V, cease activity all day	Until after the DGR falls below V for 3 or more consecutive days, or falls below DGR IV

Further recommendations are as follows:

- All activities should stop when temperature equals or exceeds relative humidity (i.e., cross over)
- When relative humidity (RH%) drops to 35% or lower, activities may continue at the discretion of the Contract Supervisor
- When high risk activities are shut down due to hazardous conditions, certain other types of activities (e.g., drilling crews, geology field work, etc.) may continue at the discretion of the Contract Supervisor

High risk activities that may be relevant to Taan Forest activities are listed in [Table 6: High Risk Activities](#)

, below, as per the Wildfire Regulation.

**Table 6: High Risk Activities**

High Risk Activities	
<ul style="list-style-type: none"> <li>- Mechanical brushing</li> <li>- Preparation or use of explosives</li> <li>- Using fire- or spark-producing tools, including cutting tools</li> <li>- Using or preparing fireworks or pyrotechnics</li> <li>- Grinding, including rail grinding</li> <li>- Mechanical land clearing</li> <li>- Operating a power saw other than while doing so on a road or a landing</li> <li>- Rock drilling (excluding core drilling)</li> <li>- Tree processing, including de-limbing</li> </ul>	<ul style="list-style-type: none"> <li>- Welding</li> <li>- Portable wood chipping, milling, processing or manufacturing</li> <li>- Log forwarding other than by logging truck on a road</li> <li>- Skidding logs</li> <li>- Operating a vehicle with metal tracks, chains or studs other than operating                             <ul style="list-style-type: none"> <li>- for road construction, road maintenance or road deactivation, or</li> <li>- on a road or landing</li> </ul> </li> <li>- Clearing and maintaining rights of way, including grass mowing</li> </ul>

# Fire Response Procedures

## Receiving an Emergency Call

The following guidelines give direction for those persons receiving emergency calls:

Through radio call procedures or contact Taan Forest personnel (250-559-2337).

After a call is received by Taan Forest personnel they must make contact with the person who reported the fire to collect the details of the fire.

1. As many relevant details as possible must be collected regarding the fire. Complete the Fire Report Form (see appendix 2) using the information collected. At minimum, record the following:
  - Geographic location of fire: mountain, town, road, block number, access, lake, river, etc.
  - Weather conditions at fire: hazard rating (ground fire, crowning), wind, smoke, visibility
  - Fire status: size, burning condition, spread, fuel (slash, plantation, timber)
  - Crews / Equipment on site: contact name / phone number, radio frequency, number of crew and list of equipment
  - Values to protect: people, dwellings, private property, bridges, felled and bucked timber, timber / plantation
2. The person who received the call must contact the Contract Supervisor (or designate Incident Commander). In the event that the Contract Supervisor can't be reached, contact the next person on the staff contact list (refer to Contact Information section 1). Carry on through the list of key company personnel until someone is contacted. Upon contact with company personnel, explain the details of the fire.
3. If the fire has not been reported to the Ministry of Forests & Range call

MOFR – Provincial Protection Branch	1-800-663-5555 or *5555 (cell)
The Coastal Fire Centre covers all the area west of the height of land on the Coast Mountain range from the U.S./Canada border at Manning Park to Tweedsmuir Park in the north, the lower mainland, the Sunshine Coast, all of Vancouver Island the Gulf Islands and Haida Gwaii. Applicable Fire Zone(s): Fraser, Haida Gwaii	



### **Additional Wildfire Information to be Recorded**

Information collected will be critical in determining the type of response the wildfire will receive, as well as allow for quick and efficient allocation of resources. The wildfire information listed below is required by the Ministry of Forests and Range (MOFR) when reporting a wildfire. At minimum, the following information should be recorded using the KPS Fire Event Report Form:

- contact information - name, phone number or radio channel/frequency
- the location of the fire - camp, operation, block name, road name
- fire rank / character - smouldering, open flame, candling, intermittent or continuous crown
- what the fire is burning (type and species) – open or heavy timber, slash, brush, grass
- the size of the fire (estimate)
- how quickly the fire is spreading (estimate)
- the colour of the smoke - white, grey, blue, brown, black
- whether there are values or lives at risk - buildings, machinery, plantation

Additional information should be collected when safe and practicable to do so. The following is a list of additional information that should be considered for collection when reporting a wildfire.

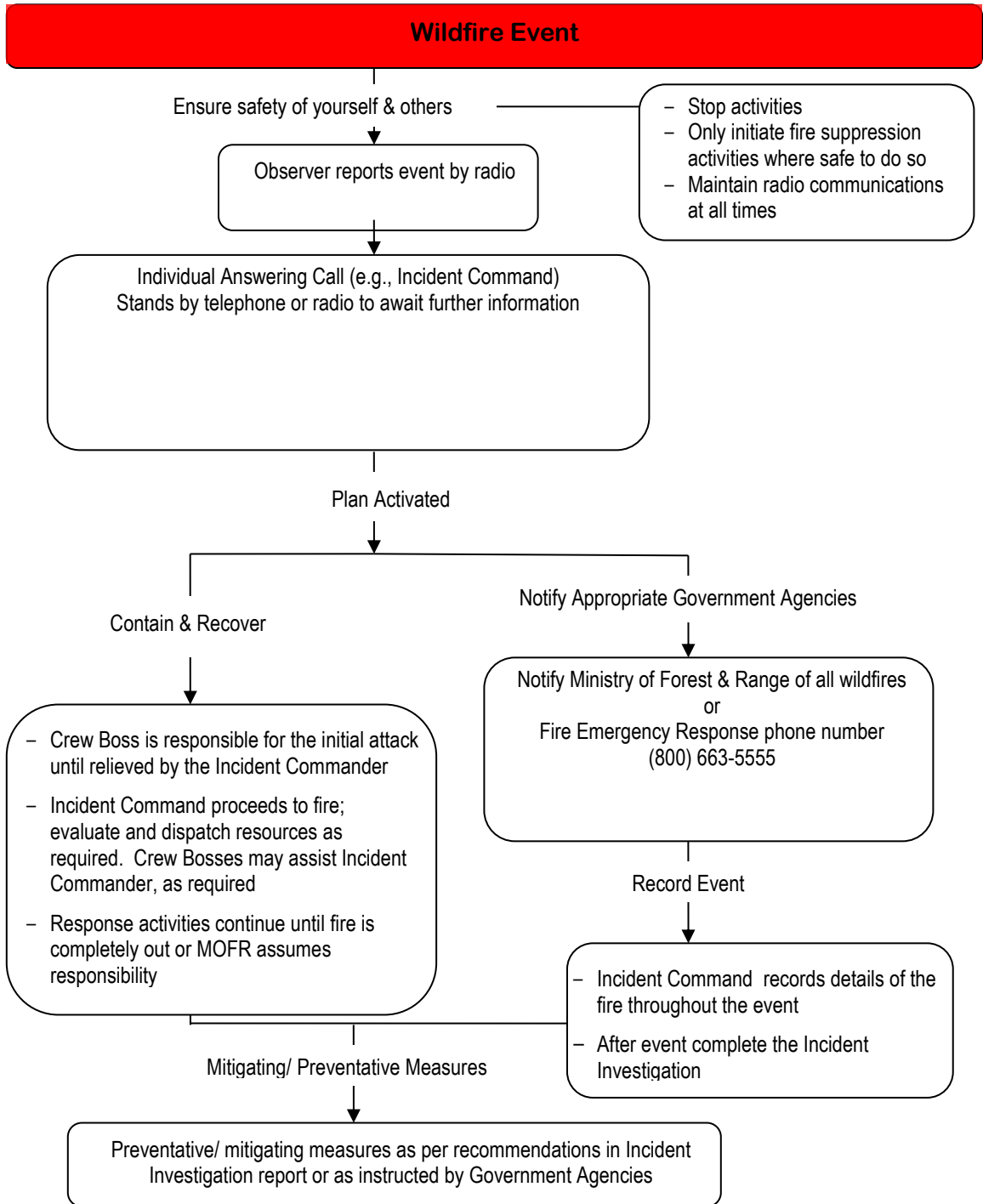
- local weather conditions - temperature, precipitation, humidity, cloud cover/fog
- access - helicopter, road, boat - and distance/direction from wildfire
- adjacent fuel type (type and species) – open or heavy timber, slash, brush, grass
- water availability - distance and direction to nearest water source
- wind speed and direction (estimate)
- slope - flat, moderate, steep
- slope exposure - aspect (N, E, S, W)
- slope position - bottom, middle, top, ridge, gully
- whether anyone is currently fighting the wildfire or proceeding to the wildfire (contact information to relay up-dates and/or instruction)
- other products involved such as diesel, hydraulic, engine oil, gasoline, etc.



# Wildfire Response

The following guidelines direct response actions for wildfire.

## Emergency Response Action Plan



Radio Call received for Forest Fire. State name, location and fire emergency.

All unrelated radio communications and road travel should cease until the incident report is provided to the Taan Forest office and permission is given by the office to continue work activities.

Incident Command (IC) should begin initializing fire response.

- a. IC will receive all information regarding the fire, including:

Geographic location of fire: mountain, town, road, block number, access, lake, river, etc.

Weather conditions at fire: hazard rating (ground fire, crowning), wind, smoke, visibility

Fire status: size, burning condition, spread, fuel (slash, plantation, timber)

Crews / Equipment on site: contact name / phone number, radio frequency, number of crew and list of equipment

Values to protect: people, dwellings, private property, bridges, felled and bucked timber, timber / plantation

- b. **Crew reporting fire should attempt to extinguish fire if trained and if safe to do so.** Equipment and other values that are or may be threatened should be removed from the area if safe to do so.

- c. IC or Taan Forest office will report the fire to the Ministry of Forest & Range **1 800-663-5555**

and provide the following:

- contact information - name, phone number or radio channel/frequency
- the location of the fire - camp, operation, block name, road name
- fire rank / character - smouldering, open flame, candling, intermittent or continuous crown
- what the fire is burning (type and species) – open or heavy timber, slash, brush, grass
- the size of the fire (estimate size of house size of football field)
- how quickly the fire is spreading (estimate)
- the colour of the smoke - white, grey, blue, brown, black
- whether there are values or lives at risk - buildings, machinery, plantation
- local weather conditions - temperature, precipitation, humidity, cloud cover/fog
- access - helicopter, road, boat - and distance/direction from wildfire
- adjacent fuel type (type and species) – open or heavy timber, slash, brush, grass
- water availability - distance and direction to nearest water source
- wind speed and direction (estimate)
- slope - flat, moderate, steep
- slope exposure - aspect (N, E, S, W)
- slope position - bottom, middle, top, ridge, gully
- whether anyone is currently fighting the wildfire or proceeding to the wildfire (contact information to relay up-dates and/or instruction)
- other products involved such as diesel, hydraulic, engine oil, gasoline, etc.

- d. Employees will muster at fire shed / box.

- IC will size up fire while other members prepare equipment
- IC will conduct LCES and WATCH OUT Safety Briefings

- e. First Aid crews should assemble all required first aid equipment to deal with fire and smoke related emergencies.
- f. Employees act under IC until fire is handed over to Ministry of Forest and Range.

**Safety Is Paramount**  
**If in Doubt – Back Out!**

## **When to Action a Fire**

The Wildfire Act requires Taan Forest to action fires that start within 1 km of our industrial activity however it is expected that Taan Forest will action all fires within its operating tenures when they pose a risk to our resources, i.e. valuable timber, bridges, etc.

When actioning a fire that Taan Forest is not legally responsible to take initial action, contact the appropriate Fire Centre and advise whether the fire involves private or crown land. Confirmation of Taan Forest' involvement in actioning the fire must be acquired from the Fire Center. This is made by asking the following question to the Fire Centre:

***“Does the Province require Taan Forest’ assistance in actioning the fire?”***

Request written confirmation that the Government will reimburse Taan Forest for taking action, all costs must be documented.

## **When to Report a Wildfire**

All fires must be reported to the Wildfire Protection Branch!

MOFR – Provincial Protection Branch	1-800-663-5555 or *5555 (cell)
-------------------------------------	--------------------------------

### **Legal Requirements**

Taan Forest' legal requirements are as follows:

*As per Wildfire Act s.6 (3) (c), if a fire starts at, or within 1 km of, the site of an industrial activity, the person carrying out the industrial activity must, as soon as practicable, report the fire as described in section 2 (outlined below).*

*Wildfire Act s.2: A person, other than a person acting in accordance with section 5 (2) or 6 (3), who sees an open fire that is burning in forest land or grass land or within 1 km of forest land or grass land and that appears to be burning unattended or uncontrolled must immediately report the fire*

- a. to an official employed by the ministry,
- b. to a peace officer, or
- c. by calling a fire emergency response telephone number (see 'receiving an emergency call' section above).

## ***Aircraft Authorization***

Prior to dispatching air support, helicopter or fixed wing, every effort must be made to contact the MOFR Fire Control Officer for (at minimum) verbal approval (i.e. to ensure costs are covered by MOFR). If the Fire Control Officer is unavailable, approval is required from Senior Taan Forest Management (e.g., Contract Supervisor).

## ***Roles and Responsibilities – Fire Response***

### **Contract Supervisor, or Incident Commander**

- Notify other Supervisors to stand-by
- Take on the role of the Incident Commander (or delegate responsibility)
- Coordinate the development of “Fire Site Safety Plan”
- Contact Coastal Fire Center, request Aircraft Authorization if required.
- Identify Sector Bosses (where required)

### **Sector Bosses**

Prepare to respond:

- Where directed, act as Sector Boss
- Instruct crews to stop work and wait for further instructions
- Leave watchmen at each site (for a period determined by Taan Forest Supervisor)
- Get tanker trucks ready
- Get additional equipment ready for action (e.g. cats, low-bed, railway equipment, etc.)
- Advise engineering and forestry crews of maps required, areas to be surveyed or aerial reconnaissance

Where required, proceed to the fire:

- Review the suppression strategy
- Determine, along with the Incident Commander and other Supervisor(s), the effectiveness of initial action and whether the fire can be controlled during the shift period
- Identify Crew Bosses

Immediately proceed to the fire and provide support to initial fire response:

- Give clear instructions on methods for safely responding to a fire
- Inform the crews about each element in the WATCH OUT (e.g. tell the crew what the weather is doing, what the action plan is, where their escape routes are, where potential hazards are located, etc.)
- Evaluate and dispatch additional resources as required to deal with the incident - including air support (refer to ‘Aircraft Authorization’ section)
- Remind fire fighters of the importance of personal protective equipment (i.e. NO flammable material (e.g., nylon or polyester fallers pants/hi-vis vests, etc.)
- Establish and maintain communication at all times with Incident Commander and field Crews
- If heavy equipment is involved in fire fighting, a basic safety talk should be given prior to start-up
- Constantly monitor the weather for changes in weather patterns (may designate a spotter to watch for weather changes and changes in fire behaviour and spread)
- Alter fire fighting plan if changes in weather result in changed fire behaviour, communicate any changes in the action plan to the Incident Commander and crew

- Record details and events of the fire using a “Fire Log” (Diary or equivalent)
- Record location of workers on fire and their start and end times
- Ensure everyone gets home at night (keep crew lists and check crew members in and out)

Implement instructions given by the Manager / Incident Commander:

- Set up schedule to report and record fire progress, local wind changes, men or equipment requirements, quantity and location of firefighting equipment, etc. to the Incident Commander or Office
- Arrange workers into Fire Crews with an associated Crew Boss (assign portable radios to Crew Bosses)
- If water is available, arrange in Fire Crews in groups of 4-6 people
- If water is to be transported into the area, additional truck drivers and pump operators may be need
- Organize 3-man mobile tanker crews or 5-man pump crews as required
- Assign each Crew Boss to a sector of the fire and outline suppression procedure
- Advise fallers of fire trails to be swamped out, logs bucked or trees felled on the fire line
- Advise machine operators where to construct fire guards
- Record quantity and location of equipment and accessories use on the fire
- Record location of workers on fire and their start and end times
- Coordinate change of shifts with *Crew Bosses*

Ensure adequate initial response:

- Understand and follow EPRP
- Efficient fire fighting force is organized and maintained
- Firefighting equipment is properly distributed
- Comply with the provisions of the Wildfire Regulations
- Establish and maintain communications with Supervisor and all field crews

### **Crew Boss**

Implement *Incident Command* instructions:

- Dispatch heavy equipment to fire area
- Supervise construction of equipment fire guards
- Arrange for fuel and rigging for heavy equipment
- Maintain communications with Incident Commander and Sector Boss
- Record quantity and location of equipment and accessories used on fire

Once the fire is extinguished, monitor and clean-up:

- Retain personnel on the fire to monitor and extinguish hot spots
- Maintain a night watchman until no hot spots are found during the day
- Recover all fire equipment and return to fire catches / shop
- Replenish all required fire equipment

Once the fire is extinguished, prepare a recommendation for replacing equipment

## **Fire Fighters**

### **Be prepared**

- Be familiar with Fire Plan
- Wear appropriate clothing (NO nylon or polyester fallers pants or hi-vis T-shirts – these items are extremely flammable)
- Know where the firefighting equipment cache is located
- Be familiar with operation of fire equipment (extinguishers, pump cans, etc.)
- Have a basic understanding of Fire Suppression tactics, safety procedures, etc. through annual Fire Suppression Training (e.g., Fire Suppression and Safety Training, WATCH OUT, etc.)
- Know the location of the closest available water and/or portable tank
- Check on the weather (monitor sticks or relative humidity) and current forest fires hazard rating

### **Evaluate the hazard**

- Consider the hazard to yourself, others and resource features
- Evacuate if necessary (e.g., explosives or extreme fire behaviour)

### **Take control**

- Secure the area
- Move resources at risk out of danger where possible
- Remove ignition sources
- Maintain communication at all times

### **Call for help**

Call your Supervisor or Office and report (as per Fire Report Form):

- Location of Fire (block / road name, longitude / latitude, UTM); indicated on a map if possible
- Fire Characteristics (estimated size at discovery, behaviour)
- Fuel Type (type of trees and ground vegetation)
- Values at Risk (human life, machinery or buildings, timber)
- Weather Conditions (12 pm readings – temperature, relative humidity, wind speed, precipitation)
- Suspected Cause (lightning, operational, public, unknown)
- Actions Taken and Proposed (equipment, man power and contact information)

Additional information should be relayed where available/when appropriate (Refer to KPS Fire Report Form)

### **Respond / Take action**

- Take on assigned role from Supervisor (i.e., typically the role of *Crew Boss* or crew in fire fighting)
- Follow directions from *Supervisor*. Ask for clarification if you don't understand your instructions
- Understand each element in the **WATCH OUT** safety review (given by the *Supervisor* or *Crew Boss*.
  - For example, workers must understand current weather patterns and how this affects the fire and their role in fire fighting, where the escape routes are, where potential hazards are located etc.). Refer to bottom of table for description of **WATCH OUT** safety review and/or the Taan Forest Wildfire Safety & Suppression Review – Level 1 course package.
- Take every precaution to prevent injury to yourself and others

- Don't action a fire without at least two safe escape routes, know where your Escape routes and Safety zones are
- Inform *Crew Boss* of any localized changes in weather
- Warn your crew and *Crew Boss* if you see something dangerous (for example give the alarm if the fire jumps the line)

### **Follow-up**

- Report all fires, even if it was immediately put out
- Mop up the area and watch for "hot spots"
- Describe all details of the incident to your *Crew Boss*
- Restock your fire equipment

### **Office Personnel**

Receive and process 'Emergency Call' and forward information to:

- Contract Supervisor
- Designate Incident Command

### **Staff**

Implement Supervisor (*Incident Commander* and/or *Sector Boss*) instructions:

- Provide maps, make ground survey of fire boundaries
- Make aerial reconnaissance of fire area and report
- Locate pump and relay tank sites, advance fire guards and locate isolated boundaries
- Provide weather forecasts, weather readings, etc.
- Join *Fire Crew* as directed



## **Fire Line Safety**

### **Crew Briefing**

Conduct Crew Briefings every day on every fire no matter how small. Discuss:

- The Chain of Command
- Designated **Lookouts** (if any)
- **Communications** plan
- **Escape Routes** that lead to adequate **Safety Zones**
- Known fire line hazards.
- Safe work procedures to be used
- Current and expected fire behavior
- Fire suppression strategies, current fire activities and progress
- Suppression tasks
- Individual work assignments

Have LCES and WATCH OUT Safety discussions every day while firefighting crews are active. Fire fighters should expect that a Sector Boss / Incident Commander (Supervisor) will give a WATCH OUT safety talk prior to any fire fighting activities.

**Weather:** Dominants fire behaviour. Be informed of weather forecasts and be familiar with how fire behaviour patterns may be affected.

**Action:** Be aware of the fire fighting action plan, based on current and expected fire behaviour.

**Tryout:** Have at least two safe escape routes, and never evacuate uphill.

**Communications:** Maintain communications with crew, boss, and other crews at all time. Warn others if you see something dangerous. Always work with a partner and know where your partner is at all times.

**Hazards:** Be aware of potential hazards (snags, falling rocks, heavy equipment or aircraft).

**Observe:** Watch for changes in wind direction, velocity, and clouds. Be aware of symptoms of heat exhaustion and watch for symptoms in yourself and others.

**Understand:** Understand your instructions, and make sure yours are understood. Ask for clarification if unsure.

**Think:** Think clearly, be alert, and act decisively before your situation becomes critical. Safety first – take every precaution to prevent injury to yourself and others.

**Lookouts** – designate a lookout to monitor fires behaviour and change in direction

**Communications** – Maintain communications with IC, Crew and fire fighters. Let everyone know of new hazards on the fire line

**Escape Routes** – Have at least two escape routes to the safe zone, marked and timed

**Safe Zones** – have pre determined safe zones that protect fire fighters from smoke, heat and other fire line hazards.

## ***Ministry of Forests and Range Take-Over Process***

For extended fires, the MOFR is expected to take over management of the fire (note: this is subject to MOFR resources being available). Taan Forest personnel (including contractors) are expected to work cooperatively with the MOFR.

Taan Forest expects to continue to make those fire response resources with 30km of the fire available during extended fires until relieved (in writing) by the MOFR.

As per Wildfire Act section 2 (a) wildfires must be immediately reported to the Provincial Protection Branch at 1-800-663-555 (or \*5555 cell).

*As per Wildfire Act s. 6 (3) (b), wildfire control action must continue until (a) the fire is extinguished, (b) it becomes impracticable to continue with fire control, or (c) relieved by an MOF official in writing.*

### ***Cost and Compensation for Fire Control - Summary***

Where Taan Forest is legally required or requested to action a fire, the government will pay compensation. Compensation is subject to Taan Forest:

- conducting an industrial activity (within 1km of the fire) and applicable to those resources located greater than 30km by road to the fire; or
- being requested to action a fire by the Fire Centre.

All firefighting costs must be tracked for potential compensation.

Aircraft authorization must be documented.

Where applicable, the Fire Centre's request for Taan Forest to action the fire must be documented.

### **Legal Requirements**

Taan Forest' legal requirements are as follows:

*As per the Wildfire Act Part 2, s.17 the government must pay compensation as prescribed to a person who, in respect of a fire, carries out fire control under an obligation imposed under section 6, or complies with an order under section 16. Subject to subsections (3) and (4), the government may pay compensation as prescribed to a person for his, her or its expenses incurred and work done in voluntarily fighting a fire on forest land or grass land or within 1km of forest land or grass land. Compensation is not payable under this section to a person in respect of a fire on private land that the person owns, rents or leases or on Crown land leased by the person from the government.*

## **Appendix 1 – Fire Cache as of April 2023**

### **LNR**

2 1500 gal water trucks

1 2000 gal water trailer

1 1500 gal bladder

5 Mark III pumps

2 3" Volume Pumps

3900' 1 ½" hose

1500' 1" hose

2 John Deer Excavators

1 D6 dozer

2 cat/ finning excavators

12 S100 trained personnel

### **Watchmen Forest Products**

1 1000 gal pump truck

Volume pump

### **Beachy Mechanocal**

1 1000 gal pump truck

2 Mark III pumps

### **Slim pickings**

1 1000 gal water truck

### **CNR**

1 2000 gallon fire truck

1– 2000 gallon water delivery truck

1 1500 gallon fire truck

Fire hose

Volume Pump

**Taan**

1 1200 gallon water Truck with BB4 400psi water delivery system

8 Mark III water delivery systems

1 slip-on water delivery system w 100 gallon tank

1 Honda 2' volume pump

12500' 1 ½" hose

8600' 1' hose

4 foam operation systems

80 gal foam

Shovels, Polaskies, water backpacks

Repair equipment

# Appendix 2 – Fire Event Report and Fire Record Forms

## Fire Event Report Form

Date: _____		Time: _____			
Operation: _____					
Location of Fire: _____		Drainage _____ RoadName _____			
Map/Sketch Attached Yes <input type="checkbox"/> No <input type="checkbox"/>					
Long.: _____		Lat.: _____ UTM: _____			
Fire Characteristics:		Fuel Type: _____			
Estimated Size at Discovery (ha): _____		Values at risk: _____			
Behavior: <input type="checkbox"/> Smoldering ground fire					
<input type="checkbox"/> Open flames – no spread					
<input type="checkbox"/> Vigorous surface fire, Moderate spread, may see candling					
<input type="checkbox"/> Moderate to fast spread, Short aerial bursts, Spotting.					
Weather Conditions (12 noon readings):					
Temp.: _____ °C Relative Humidity: _____ %; Wind: _____ km/hr; Precip.: _____ mm					
Suspected Cause: <input type="checkbox"/> Lightning <input type="checkbox"/> Operational <input type="checkbox"/> Public <input type="checkbox"/> Unknown					
Actions Taken:					
Actions Proposed (if any):					
Externally reported to: (all applicable)	Agency	Location (Office)	Contact Person	Date Notified	Method (FAX, iPhone)
	MFR (Fire Centre)				
Event reported by: _____			Phone#: _____		
<b>MFR Authorization for using aircrafts requested:</b>			Yes <input type="checkbox"/> No <input type="checkbox"/>		
<i>Received from:</i> _____					

Instructions: This form is to be used to report occurrences of a forest fire to government agencies. The form is kept on file.

## Fire Record – Initial Attack

**INSTRUCTIONS:** This section of this form is to be used to record initial attack details and report occurrences of forest fires *internally only*. The form is kept on file.

Date: _____	Time: _____
Location: _____	

**Resources:**

Manpower requested / when	Who /What arrived?	When?
<i>Manpower requested &amp; when</i>	<i>Who/ What arrived?</i>	<i>When?</i>
Fire Behavior on arrival: D Smoldering ground fire; D Open names -no spread; D Vigorous surface fire, Moderate spread, may see candling; D Moderate to fast spread, Short aerial bursts, Spotting.		Size of Fire on arrival:  Ha.
Wind Speed:                      km/hr	Difficulty to Control:	Size of Fire at end of day:
Estimate of behavior and size for next 24 hrs:		Ha.

Was initial action adequate? Why?
Was air action effective?
Was an "end of day" fire plan drawn for the next day?

Submitted by: \_\_\_\_\_

Date: \_\_\_\_\_

## Appendix 3 – Definitions

Build-Up Index (BUI)	Numerical rating of the total amount of fuel available for combustion. It combines the DMC and the DC.
Duff Moisture Code (DMC)	Numerical rating of the average moisture content of the duff layer, a layer of loosely compacted organic layers of moderate depth on the ground. The DMC gives an indication of fuel consumption in moderate duff layers and medium-sized woody material.
Drought Code (DC)	Numerical rating of the average moisture content of deep, compact, organic layers in the floor of the forest. The DC is an indicator of seasonal drought effects on the forest fuels, and amount of smouldering in deep duff layers and large logs.
Fine Fuel Moisture Code (FFMC)	Numerical rating of the moisture content of litter and other cured fine fuels. This is made up mostly of dead and down needles and leaves, as well as lichens, mosses and other small loose debris. The FFMC is an indicator of the relative ease of ignition and flammability of fine fuels.
Fire Danger Class (DGR)	The Fire Danger Class (DGR) as determined in section 6(2) of the Wildfire Regulation. DGR is determined by Fire Region (Schedule 1) using the BUI and FWI. Low – low danger rating. Moderate – carry out any forest activities with caution. High – fire hazard is serious. Extreme caution must be used in any forest activities. Extreme – extremely high fire hazard. General forest activities may be restricted, including burning permits, industrial activities and campfires.
Fire Season Wildfire Regulation s.6(1)	Means the period beginning on the third day after the area is snow free, or in areas where snow cover is often absent, the third consecutive day that the temperature at noon is at least 12 degrees, and ending on whichever occurs first the first day of October on which each of the following is present; the daily fine fuel moisture code value is 75 or less; the daily duff moisture code value is 6 or less; the drought code value is 15 or less, or noon of the first day on which the area becomes snow covered.
Fire Rank	Fire Rank has been used to differentiate between a minor and major fire. The Fire Rank system enables fire fighters to communicate a summarized assessment of fire behaviour. Rank 1 – smouldering ground or creeping surface fire. Rank 2 – low vigour surface fire. Rank 3 – moderately vigorous surface fire. Rank 4 – highly vigorous surface fire, torching (or passive crown fire). Rank 5 – extremely vigorous surface fire or active crown fire. Rank 6 – blow-up or conflagration; extreme fire behaviour.



Fire Weather Index (FWI)	Numerical rating of fire intensity. It combines the ISI and the BUI. It is suitable as a general index of fire danger and accounts for the effects of fuel moisture and wind on fire behaviour.
Major Fire Fire Rank 3-6	A fire is considered major if it is not brought under control by 10:00 am the morning following its outbreak. As per KPS's Environmental Reporting Standard, a major fire is defined as Level 1 or Level 2 (most severe) A major fire can also be defined by Fire Rank 3 to Fire Rank 6 (see definitions above).
Minor Fire	A fire is considered minor if it is brought under control by 10:00 am the morning following its outbreak. As per KPS's Environmental Reporting Standard, a minor fire is defined as Level 3 or Level 4 (least severe). A minor fire can also be defined by Fire Rank 1 to Fire Rank 2 (see definitions above).
High Risk Activity Wildfire Regulation s.1(1)	<p>A high risk activity includes:</p> <ul style="list-style-type: none"> <li>– Mechanical brushing;</li> <li>– Disk trenching;</li> <li>– Preparation or use of explosives;</li> <li>– Using fire or spark-producing tools, including cutting tools;</li> <li>– Using or preparing fireworks or pyrotechnics;</li> <li>– Grinding, including rail grinding;</li> <li>– Mechanical land clearing;</li> <li>– Operating a power saw other than while doing so on a road or a landing or in a log sort area;</li> <li>– Rock drilling; provided drill is not within combustible material</li> <li>– Tree processing, including de-limbing;</li> <li>– Welding;</li> <li>– Portable wood chipping, milling, processing or manufacturing;</li> <li>– Log forwarding other than by logging truck on a road;</li> <li>– Skidding logs;</li> <li>– Yarding logs using cable systems;</li> <li>– Operating a vehicle equipped with metal tracks, chains or studs other than operating it</li> <li>– for road construction, road maintenance or road deactivation, or</li> <li>– on a road or landing or in a log sort area;</li> <li>– Clearing or maintaining rights of way, including grass mowing.</li> </ul>

<p>Industrial Activity Wildfire Regulation s.1(3)</p>	<p>An industrial activity includes:</p> <ul style="list-style-type: none"> <li>– debris piling,</li> <li>– mechanical modification of forest debris,</li> <li>– silviculture treatments,</li> <li>– timber harvesting,</li> <li>– road construction,</li> <li>– road maintenance,</li> <li>– road deactivation,</li> <li>– yarding logs with helicopter,</li> <li>– operating a power saw on a road/landing/log sort area,</li> <li>– the use of machinery on a road/landing/log sort area, and</li> <li>– loading logs on a road/landing/log sort area.</li> </ul> <p>Operating equipment or machinery in relation to activities other than forest management during</p> <ul style="list-style-type: none"> <li>– debris piling,</li> <li>– road construction, road maintenance or road deactivation,</li> <li>– rock drilling,</li> <li>– mining operations,</li> <li>– railway operations,</li> <li>– utility transmission operations, or</li> <li>– portable wood chipping, milling, processing or manufacturing</li> </ul>
<p>Initial Spread Index (ISI)</p>	<p>Numerical rating of the expected rate of fire spread. It combines the effects of wind and the FFMC on rate of spread without the influence of variable quantities of fuel.</p>
<p>Water Delivery System</p>	<p>A system that can deliver a sufficient volume of water to effectively fight a fire of a reasonable foreseeable size, taking all factors into consideration, including the conditions of any area where the delivery system may need to be used. Also a system that can deliver water to any place at the site of an industrial activity, on the burn area or the site of the high risk activity, or reasonably adjacent to the burn site or the site of a high risk activity.</p> <p>A person carrying out a timber harvesting operation that uses helicopters to extract logs must ensure that all helicopters used in the operation are equipped and maintained such that they meet the requirements of the definition of a “water delivery system”.</p>

# Appendix 4 – Risk Map

